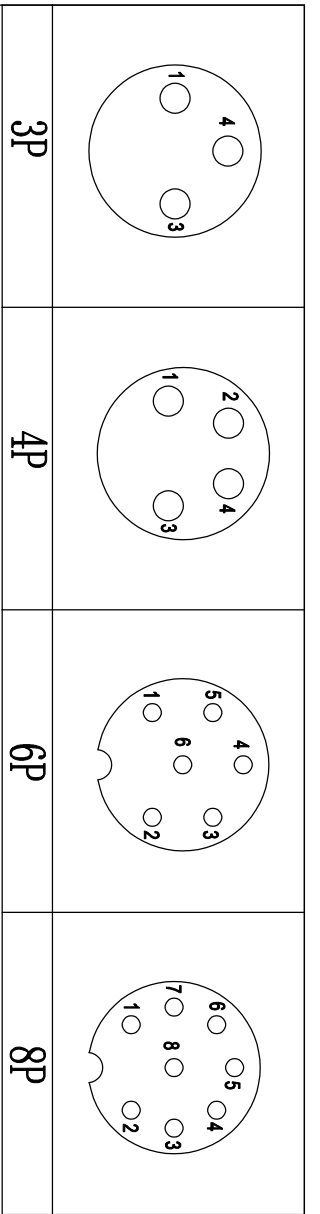


REV	ECN	SIGN	DATE	DESCRIPTION
1.0	V0	K. ZHAO	10/21/2021	/



Pin Assignments

NOTES:

1. RoHS Compliant
2. Levels of protection: IP67
3. Installation mode: Solder, Back Fastened
4. Operating temperature: -40°C~105°C
5. Applicable Panel: Panel Hole
6. Connector tolerances:  
For Panel Thickness Max: 4.5mm

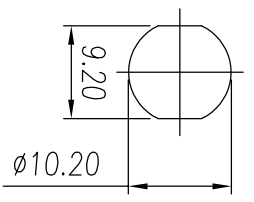
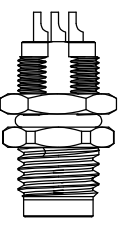
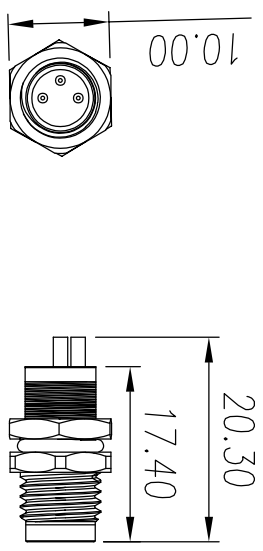
variable range	linear dimension								≡	□	∥	⊥
	to	over	to	over	to	over	to	over				
10	18	30	50	80	120	160	all	5	5	30	120	to
	to	to	to	to	to	to	to	to	to	to	to	to
tolerance	±0.15	±0.25	±0.35	±0.55	±0.80	±1.05	±1.30	0.5	0.025	0.06	0.12	0.4

SDD-M8A - XXP - MM-SH7000 - 00AH

Standard

Coding: A,B

Poles



Panel Hole

Remark: This drawing is a controlled document for Cymannu. All specifications are subject to change without prior notice.

SIZE:	SCALE:	CHECKED:	DATE:	PART NO.:	TITLE:
A4	4 : 3	K. ZHAO	10/21/2021	SDD-M8A-XXP-MM-SH7000-00AH	M8A male, Back Fastened Socket
UNIT: mm	SHEET:	APPROVED:	DATE:	CUSTOMER:	
1 / 1	1 / 1	H. JIANG	10/21/2021	/	

**Cymannu** 矽宇電子  
NINGBO CHANGTU ELECTRONICS MANUFACTURING CO., LTD  
Email: sales@cymannu.com WWW.CYMANNU.COM